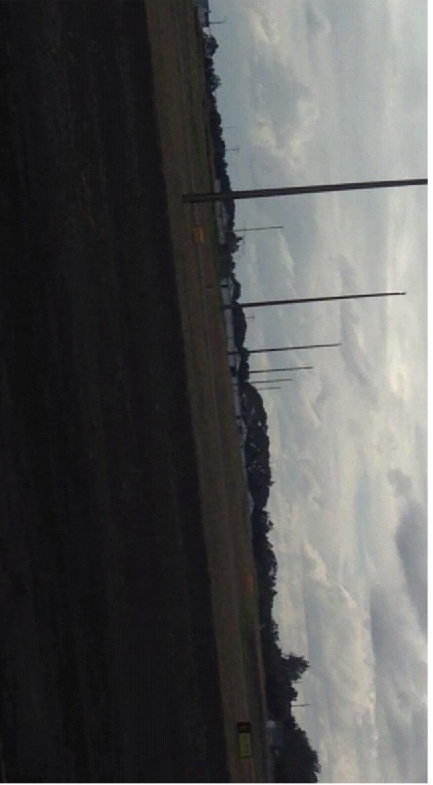




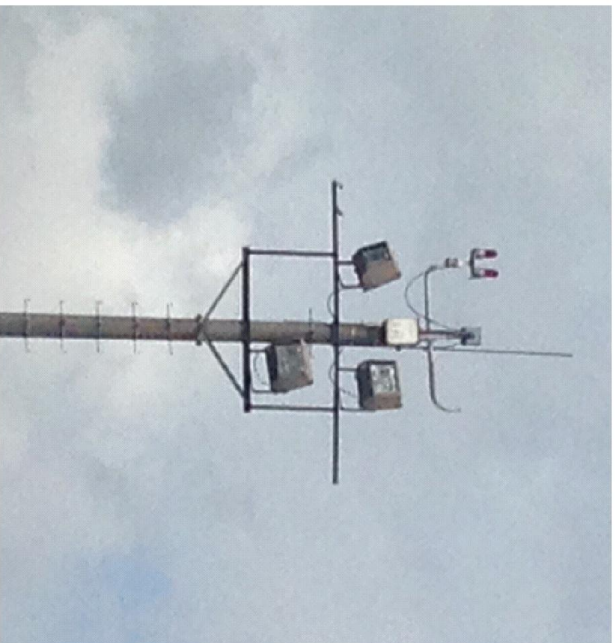
Existing Concrete Light Mast/Pole at the Remote Parking Area to be supplied and installed with LED Apron Floodlights and Obstruction Lights (Complete Fixture) together with their corresponding power feeder/supply, controls and mounting bracket.



Existing Concrete Light Mast/Pole at the Remote Parking Area to be supplied and installed with LED Apron Floodlights and Obstruction Lights (Complete Fixture) together with their corresponding power feeder/supply, controls and mounting bracket.



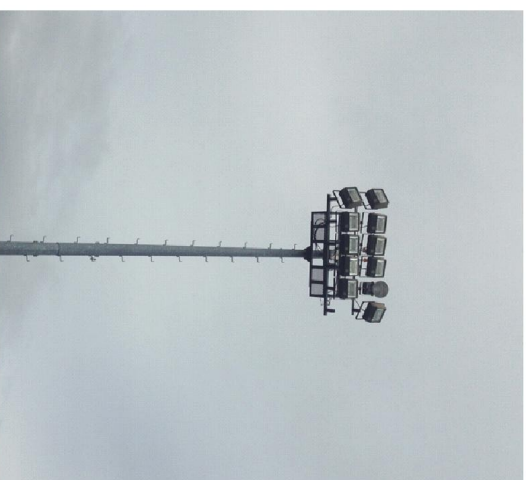
Sample of the Apron Floodlights Mounting Bracket



Sample of the Apron Floodlights Mounting Bracket



Existing Steel Light Mast/Pole at the Apron Ramp



Existing Steel Light Mast/Pole at the Apron Ramp

PROJECT /LOCATION:

Supply and Installation of LED (Light Emitting Diode)

Apron Floodlights and Obstruction Lights at the Apron Ramp and Remote Parking Area of Clark International Airport Corporation
CLARK INTERNATIONAL AIRPORT CORPORATION
 CIVIL AVIATION COMPLEX, CLARK FREEPORT ZONE, PAMPANGA

SUBMITTED BY:

FEDERICO G. GARCIA JR.
 OIC - EMD

RECOMMENDING APPROVAL:

DAN A. BAUTISTA
 VP-OPERATION MANAGEMENT GROUP

APPROVED BY:

ALEXANDER S. CAUGUIRAN
 OIC / ACTING PRESIDENT & CEO

DISCIPLINE:

ELECTRICAL

SHEET NO.:

PICTURES / PHOTOS