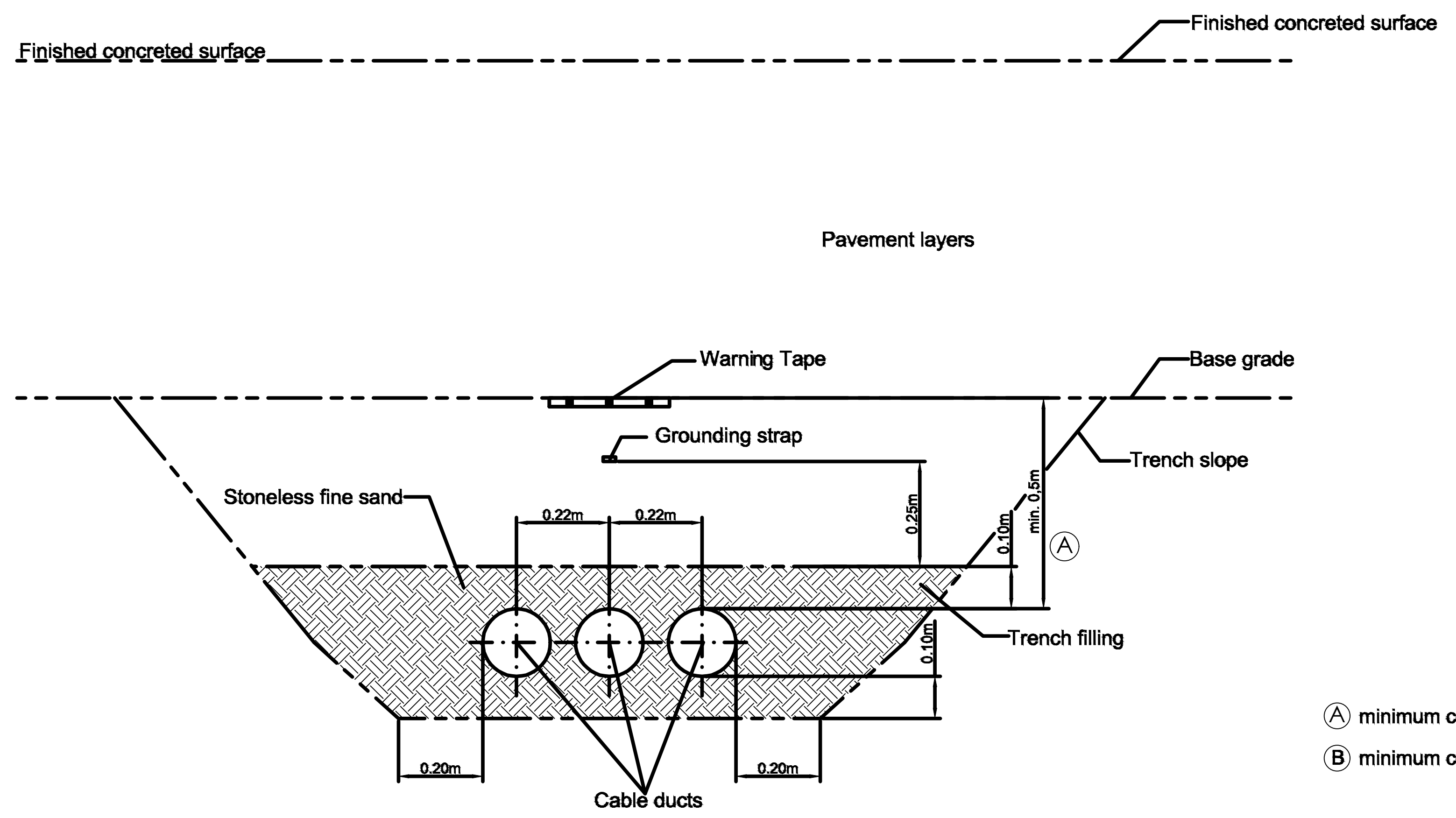


A TYPICAL SECTION OF 2 PIPELINE/ 3 CABLE DUCTS
SCALE: N.T.S.



B TYPICAL SECTION OF 3 CABLE DUCTS
SCALE: N.T.S.

- (A) minimum coverage between cable duct and base grade of taxiway / apron
- (B) minimum coverage between hydrant fuel line and base grade of taxiway / apron

NOTE:
 1. IF THIS DRAWING HAS BEEN RECEIVED ELECTRONICALLY, IT IS THE RECIPIENTS RESPONSIBILITY TO PRINT THE DOCUMENT TO THE CORRECT SCALE.
 2. THIS DRAWING SHOULD BE READ IN CONJUNCTION WITH OTHER RELEVANT DRAWINGS AND SPECIFICATIONS.
 3. ALL DIMENSION IN METER UNLESS OTHERWISE SHOWN.

CONSULTANTS:	DRAWN BY:	R.A.B.C.	SUBMITTED BY:	RECOMMENDING APPROVAL:	APPROVED BY:	PROJECT TITLE :	DRAWING STATUS:	FINAL	SET NO.	SHEET NO.
Urban Integrated Consultants, Inc. <small>UICI Corporate Bldg., 8 Lands Street, VASRA, Diliman, Quezon City, 1128</small>	CHECKED BY:		EFREN L. DAVID <small>PRESIDENT - UICI</small>	CLARK INTERNATIONAL AIRPORT CORPORATION	JAIME ALBERTO C. MELO <small>VICE PRESIDENT AIRPORT OPERATION MANAGEMENT GROUP</small>	ALEXANDER S. CAUGUIRAN <small>PRESIDENT / CHIEF EXECUTIVE OFFICER</small>	CONSTRUCTION OF THE HORIZONTAL INFRASTRUCTURE PROJECT OF THE CLARK INTERNATIONAL AIRPORT NEW TERMINAL BUILDING PROJECT (FORMERLY CLARK AIRPORT LOW COST TERMINAL)		REVISION Δ : JULY 9, 2018	AF-3 107 116
	DWGS. CHK. BY:	A.T.C.					SHEET CONTENTS:	CROSS SECTION TYPICAL DETAILS		