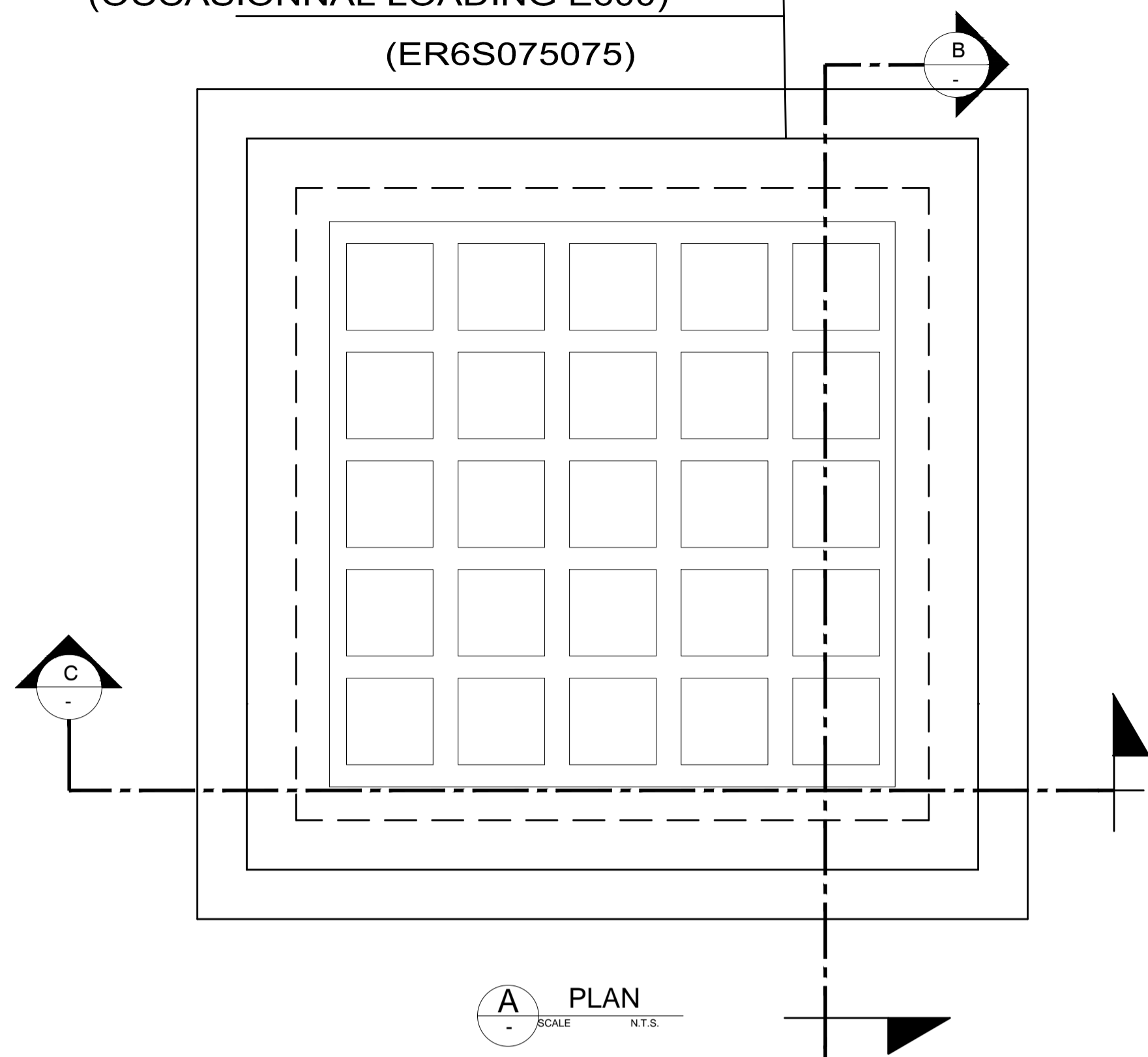
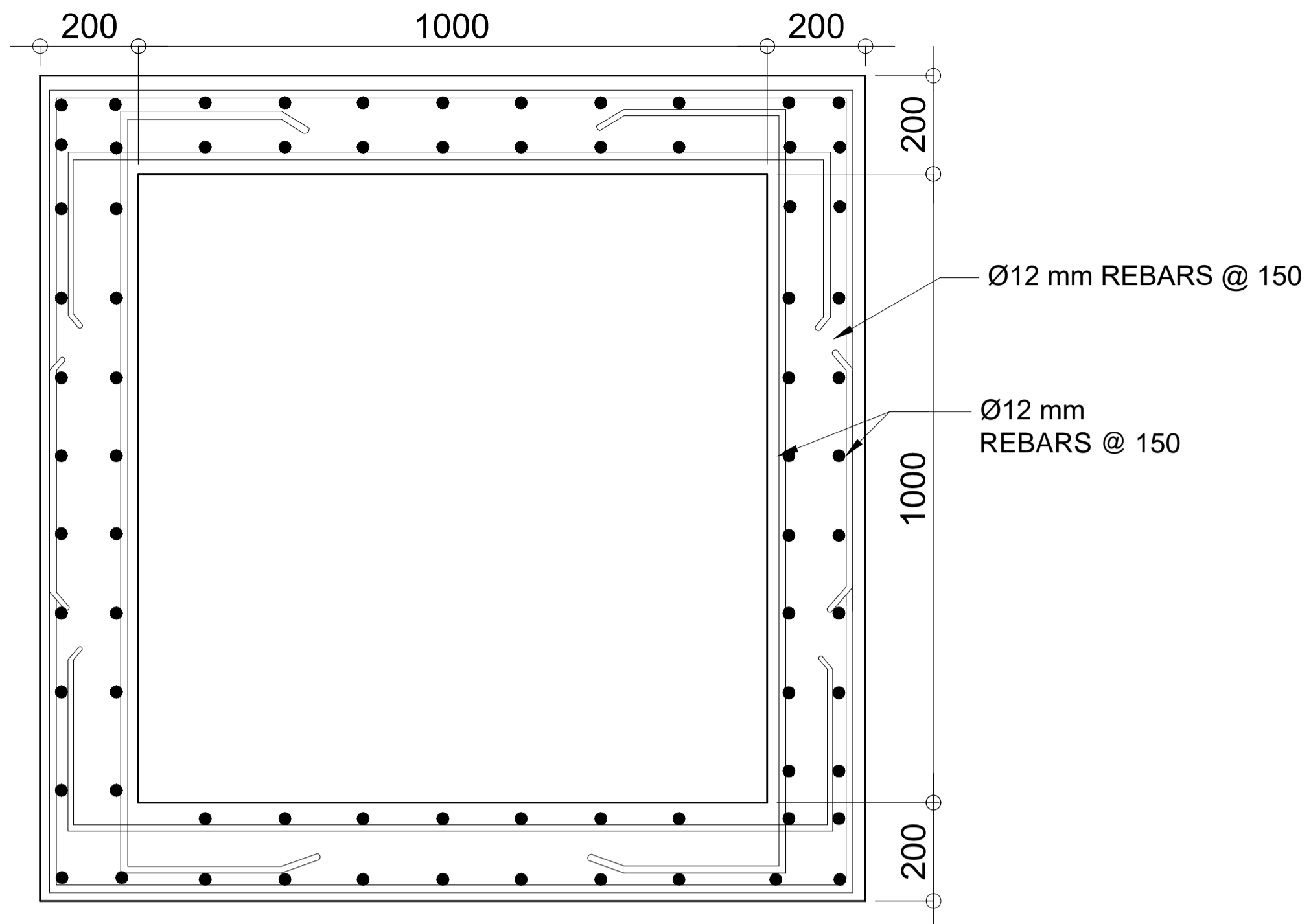


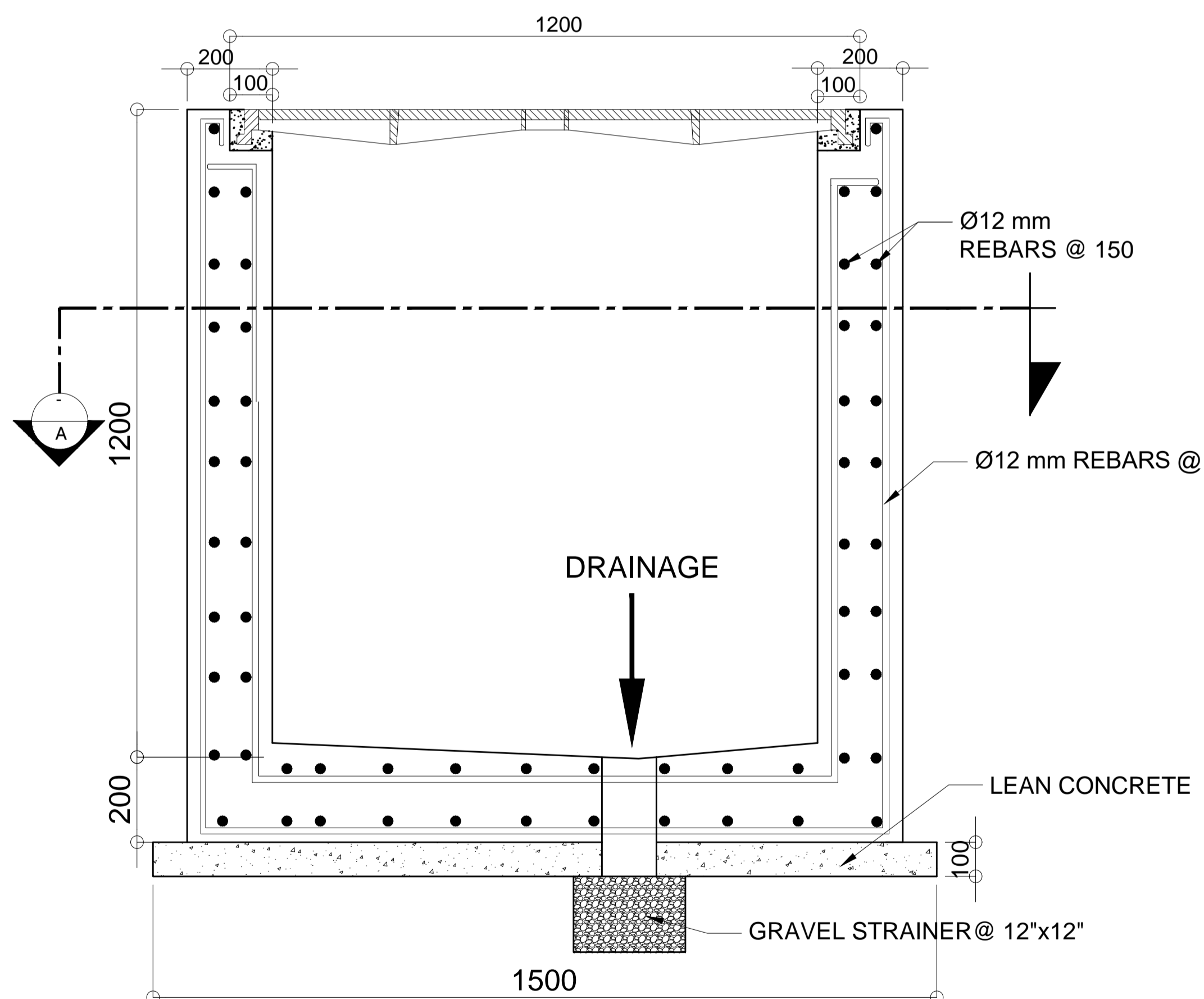
(OCCASIONAL LOADING E600)
(ER6S075075)



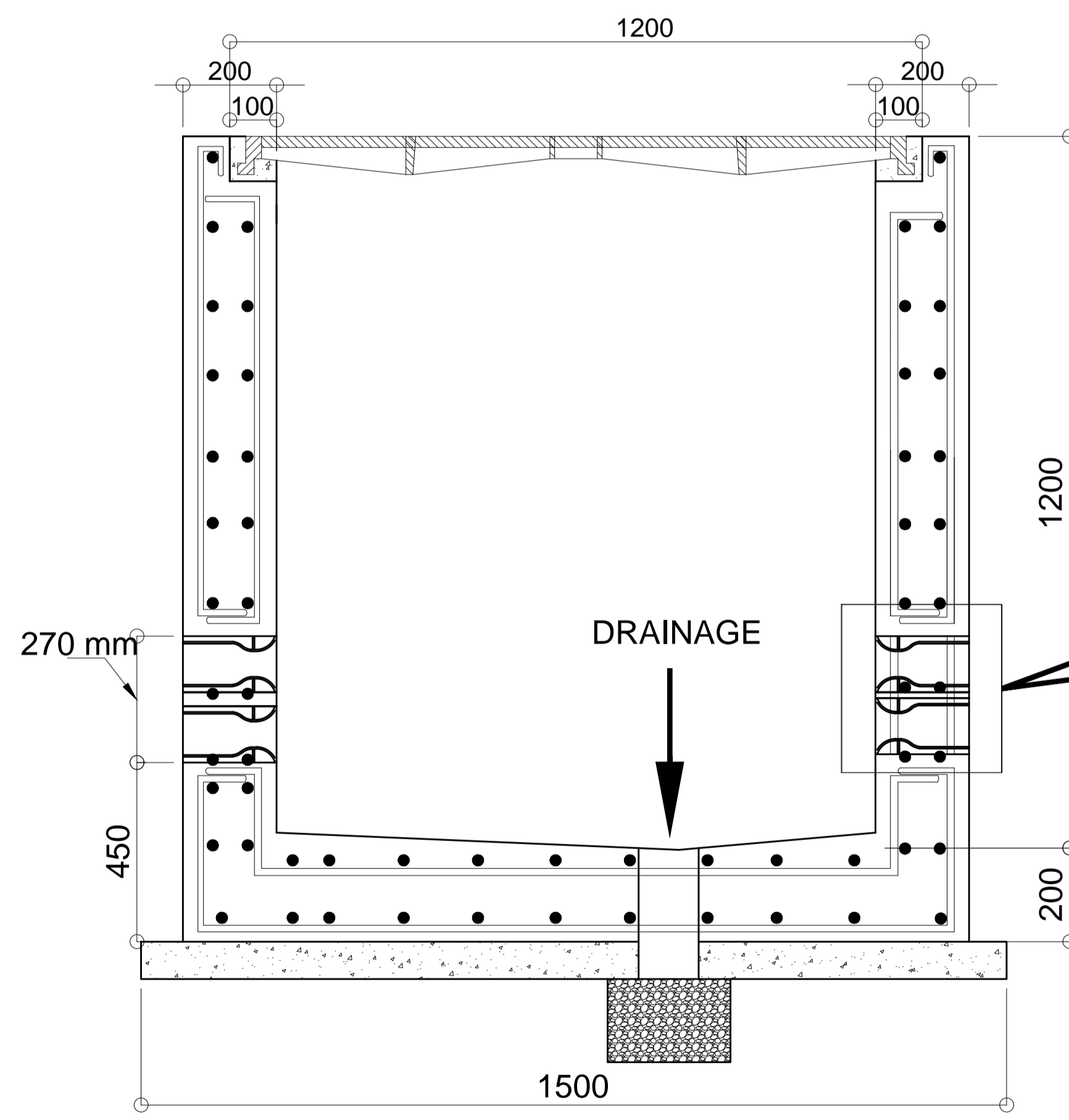
A PLAN
SCALE N.T.S.



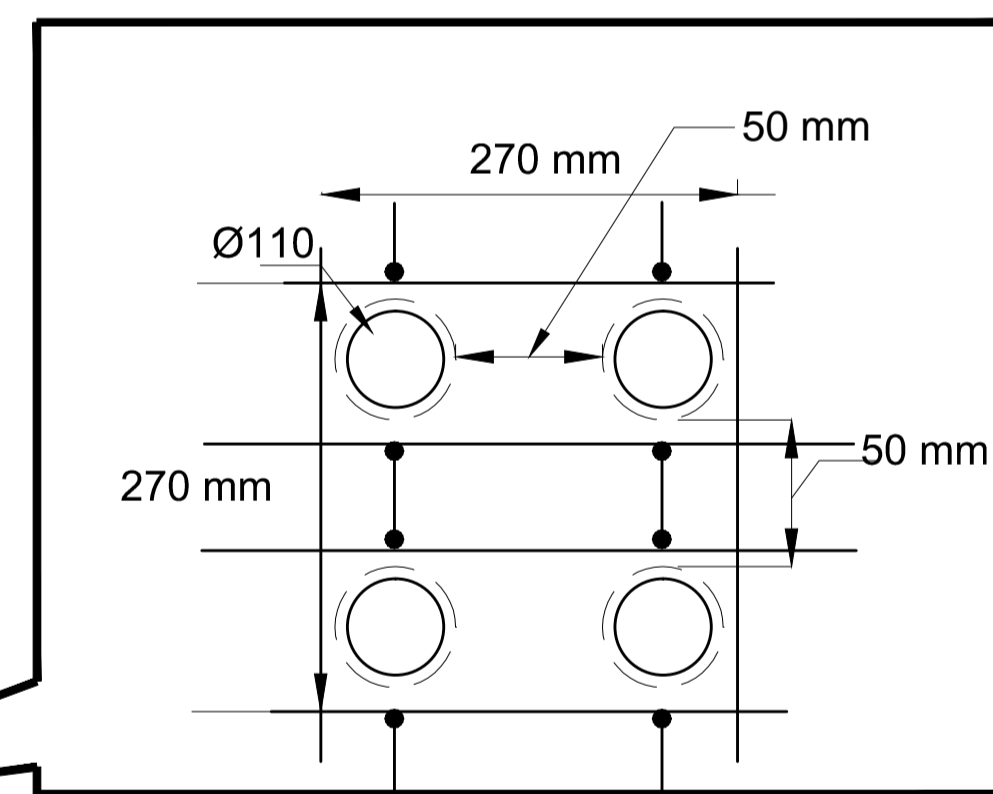
B SECTION THRU-A
SCALE N.T.S.



C SECTION THRU-B
SCALE N.T.S.



D SECTION THRU-C
SCALE N.T.S.



DETAIL A

DETAILS OF TYPICAL AGL MANHOLE

- NOTE:
- IF THIS DRAWING HAS BEEN RECEIVED ELECTRONICALLY, IT IS THE RECIPIENTS RESPONSIBILITY TO PRINT THE DOCUMENT TO THE CORRECT SCALE.
 - THIS DRAWING SHOULD BE READ IN CONJUNCTION WITH OTHER RELEVANT DRAWINGS AND SPECIFICATIONS.
 - ALL DIMENSION IN METER UNLESS OTHERWISE SHOWN.

CONSULTANTS:	DRAWN BY:	C.M.L.	SUBMITTED BY:	RECOMMENDING APPROVAL:	APPROVED BY:	PROJECT TITLE :	PROJECT TITLE :	DRAWING STATUS:	FINAL	SET NO.	SHEET NO.
<p>Urban Integrated Consultants, Inc. UICI Corporate Bldg., 8 Landis Street, VASRA, Diliman, Quezon City, 1128</p>	CHECKED BY:	J.Q.G.	EFREN L. DAVID PRESIDENT - UICI	JAIME ALBERTO C. MELO VICE PRESIDENT AIRPORT OPERATION MANAGEMENT GROUP	ALEXANDER S. CAUGUIRAN PRESIDENT / CHIEF EXECUTIVE OFFICER	CONSTRUCTION OF THE HORIZONTAL INFRASTRUCTURE PROJECT OF THE CLARK INTERNATIONAL AIRPORT NEW TERMINAL BUILDING PROJECT (FORMERLY CLARK AIRPORT LOW COST TERMINAL)		REVISION Δ:	JULY 09, 2018	TA-13	89 116
	DWGS. CHK. BY:	A.T.C.				SHEET CONTENTS:	DETAILS OF TYPICAL AGL MANHOLE	REVISION Δ:	JULY 16, 2018		

